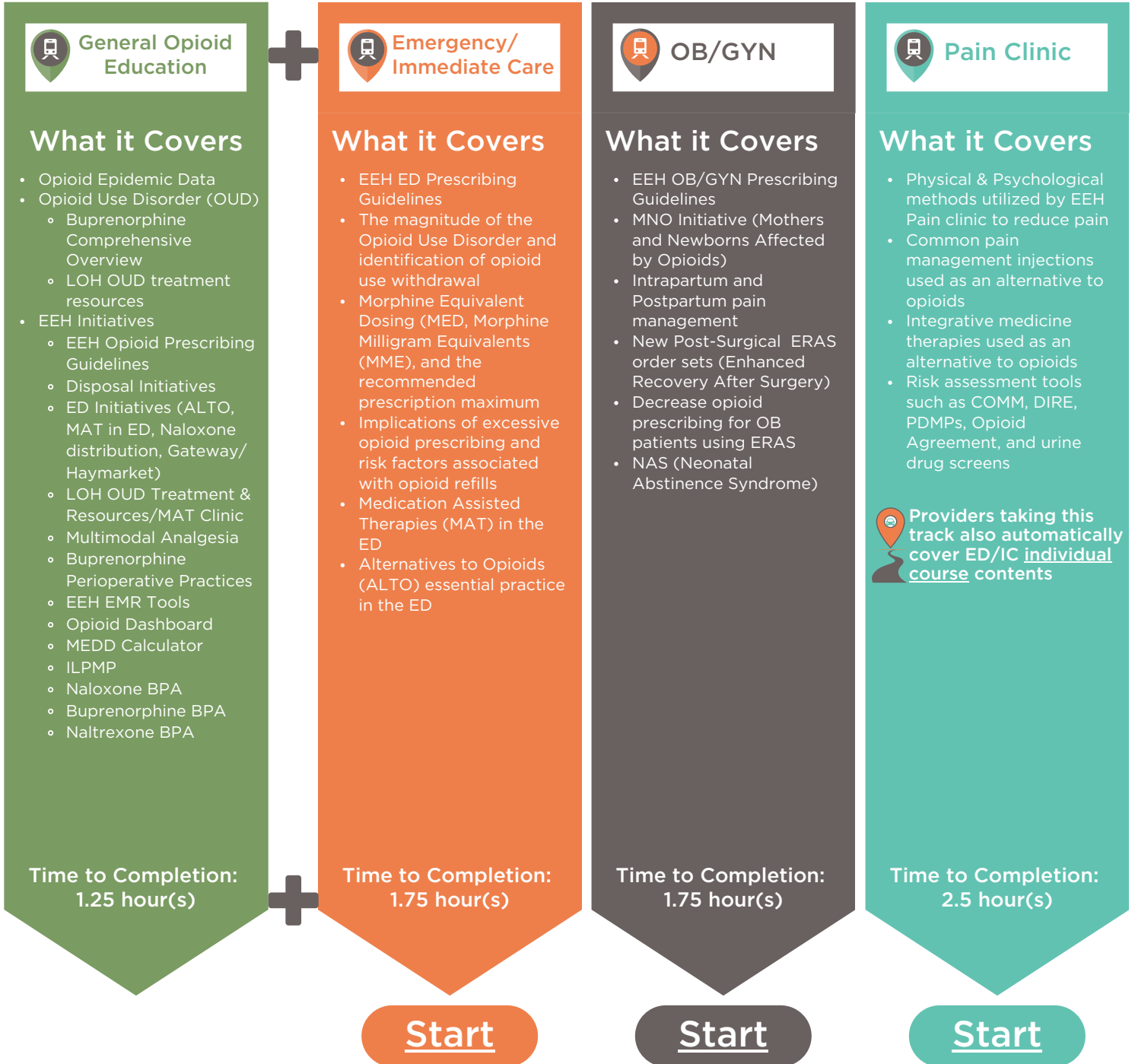




EEH OPIOID SPECIALTY TRAINING TRACKS



Each course begins with completion of the general track, then each specialty course includes relevant course material appropriate to that specialty. Complete your specialty track by clicking on the start buttons below.



Providers taking this track also automatically cover ED/IC individual course contents

Participants will need a computer with access to the internet and sound to hear the video. A post-test and evaluation needs to be completed before credit is applied and a certificate is emailed.



EEH OPIOID SPECIALTY TRAINING TRACKS



Each course begins with completion of the general track, then each specialty course includes relevant course material appropriate to that specialty. Complete your specialty track by clicking on the start buttons below.

Surgery

What it Covers

- EEH SURGICAL opioid prescribing guidelines and introduction to surgical track

Providers taking this track also automatically cover the following individual courses:

- Multimodal Analgesia**
 - Multimodal analgesia in the perioperative period
 - How using multimodal analgesia can reduce opioid use
- Buprenorphine and Acute Pain Management**
 - EEH's perioperative process for surgical patients on buprenorphine
 - Treatment considerations from the perioperative process to patients with non-surgical acute pain on buprenorphine

Time to Completion:
3.0 hour(s)

Start

**Inpatient/
Medical**

What it Covers

- EEH INPATIENT/
MEDICAL opioid prescribing guidelines and introduction to surgical track

Providers taking this track also automatically cover the following individual courses:

- Emergency/
Immediate Care**
- Pain Clinic**
- Surgery**
- Multimodal Analgesia**
- Buprenorphine and Acute Pain Management**

Time to Completion:
4.25 hour(s)

Start

**Primary Care/
Ambulatory**

What it Covers

- EEH PRIMARY CARE opioid prescribing guidelines
- Acute vs. Chronic Pain and the impact on patients
- Opioid Use Disorder (OUD) and the ABCD-PQRS identification method
- Low, Moderate, and High risk factors for developing OUD
- Standard practice protocols for safe and effective patient care when prescribing opioids

Providers taking this track also automatically cover the following individual courses:

- Emergency/
Immediate Care**
- Pain Clinic**

Time to Completion:
3.0 hour(s)

Start

**Additional
Training Options**

The following individual courses are available to providers in addition to their specialty tracks.

ED/IC

Go to Course

Pain Clinic

Go to Course

OB/GYN

Go to Course

Primary Care/
Ambulatory

Go to Course

Multimodal Analgesia

Go to Course

Buprenorphine and Acute Pain Management

Go to Course

Additional external courses are available at minimal or no cost to providers.

More information & resources on the EEH ACME Website

Go to Site





Participants will need a computer with access to the internet and sound to hear the video. A post-test and evaluation needs to be completed before credit is applied and a certificate is emailed.



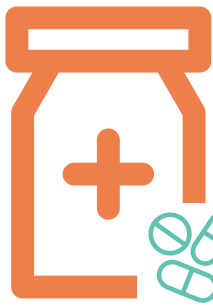
EEH OPIOID INDIVIDUAL TRAINING COURSES



All providers are encouraged to take the general Opioid Education course if they are not already taking a specialty track. Additionally, there are other individual courses available and may be used to complete the Illinois licensure requirements.

 General Opioid Education	 OB/GYN	 Pain Clinic	 Multimodal Analgesia
<p>What it Covers</p> <ul style="list-style-type: none"> • Opioid Epidemic Data • Opioid Use Disorder (OUD) <ul style="list-style-type: none"> ◦ Buprenorphine Comprehensive Overview ◦ LOH OUD treatment resources • EEH Initiatives <ul style="list-style-type: none"> ◦ EEH Opioid Prescribing Guidelines ◦ Disposal Initiatives ◦ ED Initiatives (ALTO, MAT in ED, Naloxone distribution, Gateway/Haymarket) ◦ LOH OUD Treatment & Resources/MAT Clinic ◦ Multimodal Analgesia ◦ Buprenorphine Perioperative Practices ◦ EEH EMR Tools ◦ Opioid Dashboard ◦ MEDD Calculator ◦ ILPMP ◦ Naloxone BPA ◦ Buprenorphine BPA ◦ Naltrexone BPA <p>Time to Completion: 1.25 hour(s)</p>	<p>What it Covers</p> <ul style="list-style-type: none"> • EEH OB/GYN Prescribing Guidelines • MNO Initiative (Mothers and Newborns Affected by Opioids) • Intrapartum and Postpartum pain management • New Post-Surgical ERAS order sets (Enhanced Recovery After Surgery) • Decrease opioid prescribing for OB patients using ERAS • NAS (Neonatal Abstinence Syndrome) <p>Time to Completion: 0.50 hour(s)</p>	<p>What it Covers</p> <ul style="list-style-type: none"> • Physical & Psychological methods utilized by EEH Pain clinic to reduce pain • Common pain management injections used as an alternative to opioids • Integrative medicine therapies used as an alternative to opioids • Risk assessment tools such as COMM, DIRE, PDMPs, Opioid Agreement, and urine drug screens <p>Time to Completion: 0.75 hour(s)</p>	<p>What it Covers</p> <ul style="list-style-type: none"> • Review of multimodal analgesia in the perioperative period • Using multimodal analgesia to reduce opioid use <p>Time to Completion: 0.75 hour(s)</p>
<u>Start</u>	<u>Start</u>	<u>Start</u>	<u>Start</u>


Participants will need a computer with access to the internet and sound to hear the video. A post-test and evaluation needs to be completed before credit is applied and a certificate is emailed.



EEH OPIOID INDIVIDUAL TRAINING COURSES



All providers are encouraged to take the general Opioid Education course if they are not already taking a specialty track. Additionally, there are other individual courses available and may be used to complete the Illinois licensure requirements.


 **Emergency/ Immediate Care**

What it Covers

- EEH ED Prescribing Guidelines
- The magnitude of the Opioid Use Disorder and identification of opioid use withdrawal
- Morphine Equivalent Dosing (MED, Morphine Milligram Equivalents (MME), and the recommended prescription maximum
- Implications of excessive opioid prescribing and risk factors associated with opioid refills
- Medication Assisted Therapies (MAT) in the ED
- Alternatives to Opioids (ALTO) essential practice in the ED

Time to Completion:
0.50 hour(s)

[Start](#)

 **Primary Care/ Ambulatory**

What it Covers

- EEH PRIMARY CARE opioid prescribing guidelines
- Acute vs. Chronic Pain and the impact on patients
- Opioid Use Disorder (OUD) and the ABCD-PQRS identification method
- Low, Moderate, and High risk factors for developing OUD
- Standard practice protocols for safe and effective patient care when prescribing opioids

Time to Completion:
0.50 hour(s)

[Start](#)


 **Buprenorphine & Acute Pain Mgmt**

What it Covers

- Review of updates to EEH's perioperative process for surgical patients on buprenorphine.
- Treatment considerations from the perioperative process to patients with non-surgical acute pain on buprenorphine

Time to Completion:
0.75 hour(s)

[Start](#)

 **Additional Training Options**

The following external courses are available to providers at little or no cost from accredited institutions.

Center for Disease Control & Prevention
[Go to Course](#)

American College of Physicians
[Go to Course](#)

NEJM Knowledge & Internal Medicine Board Review
[Go to Course](#)

Illinois State Medical Society
[Go to Course](#)

University of Texas at Austin Dell Medical School
[Go to Course](#)

Illinois Academy of Family Practice Physicians
[Go to Course](#)

Additional external courses are available at minimal or no cost to providers.

More information & resources on the EEH ACME Website
[Go to Site](#)

Participants will need a computer with access to the internet and sound to hear the video. A post-test and evaluation needs to be completed before credit is applied and a certificate is emailed.



EEH ILLINOIS MANDATED TRAINING COURSES



In addition to the 3.0 hours of opioid training, providers are also required to complete the following training courses to renew their licensure prior to the July 31, 2023, deadline. Click the **START** button to begin the courses.

<p>1.0 Hour of Sexual Harassment</p>	<p>1.0 Hour of Implicit Bias</p>	<p>1.0 Hour of Dementia Training</p>	<p>8.0 Hour of MATE Training for DEA</p>
<p>The course covers an explanation of sexual harassment consistent with the Illinois Human Rights Act; examples of conduct that may constitute unlawful sexual harassment; a summary of Federal and State statutory laws concerning sexual harassment including remedies available to victims; a summary of employer responsibilities in the prevention, investigation, and corrective measures of sexual harassment. It also covers the AMA's Code of Medical Ethics regarding Romantic or Sexual Relationships with Patients, Romantic or Sexual Relationships with Key Third Parties, and Sexual Harassment in the Practice of Medicine. This course also cover content provided by the Joint Commission for Culture Safety.</p>	<p>This interactive course assists participants in digging deeper into their own unconscious biases and give them practical techniques for acting and thinking consciously in order to make objective decisions. Ultimately this will start a path toward diversity and inclusion and recognizing how each of us plays a role in making healthcare equitable. By understanding our own unconscious bias and what effect they may have on others, especially in healthcare, we can think more critically and consciously and plan to implement change.</p>	<p>This activity was designed to assist all health professionals in recognizing the differences between the cognitive, functional, and behavioral changes of normal aging and those specifically associated with mild cognitive impairment and dementia. It also focuses on the most common types of dementia, prevalence, risk factors, signs and symptoms, rate of progression, and stages of dementia to support providers in dementia diagnosis. Additional information will also be provided on the impact of dementia on minority groups and addressing social determinants of health to improve health equity efforts.</p>	<p>Resources for 8-hour MATE DEA Compliance:</p> <ul style="list-style-type: none"> • YALE: Addiction Treatment - Clinical Skills for Healthcare Providers • BOSTON UNIVERSITY: Scope of Pain • PROVIDERS CLINICAL SUPPORT SYSTEM: MOUD Training - Medications for Opioid Use Disorder • ADDICTION POLICY FORUM - individual courses that, when combined, meet the 8-hour minimum requirement.
<p>Start</p>	<p>Start</p>	<p>Start</p>	<p>Start</p>
<p>DCFS Mandatory Reporting Training Is required every 3 years. If you have taken this course within the past 3 years, you do not need to take it for your license renewal.</p> <p>Start</p>			