

Physician Resource Team



Sanjeeb Khatua, MD

Executive Vice President, Edward-Elmhurst Health Physician & Ambulatory Network
t: 630.527.5328

Sanjeeb.Khatua@EEHealth.org



Jackie Smith

System Director, Physician Recruitment, Medical Staff Affairs & CME
t: 630.527.3915

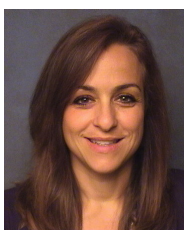
Jackie.Smith@EEHealth.org



Kelly Affetto

Physician Network & Business Development Manager
c: 773.988.3828

Kelly.Affetto@EEHealth.org



Madeline Fanelli

Physician Relations Manager
c: 630.361.5150

Maddelena.Fanelli@EEHealth.org



Ellen Michael

Physician and Ambulatory Sales Manager
c: 847.612.7058

Ellen.Michael@EEHealth.org



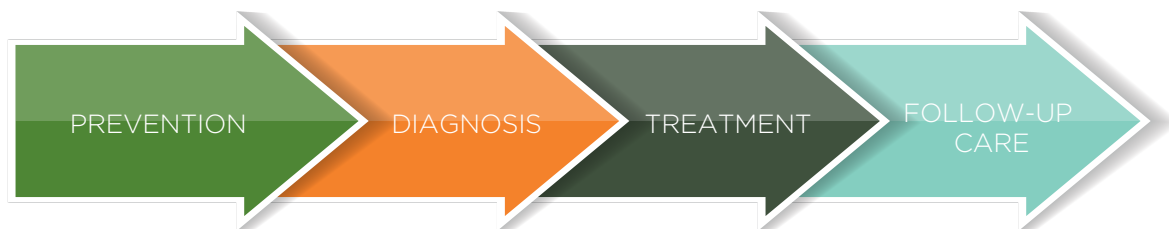
Dar Schodtler

Physician Network & Business Development Manager
c: 630.777.7001

Darlene.Schodtler@EEHealth.org

Cardiovascular & Interventional Radiology Services at Edward-Elmhurst Health

At Edward-Elmhurst Health, your patients have access to the latest advancements for diagnosing and treating heart and vascular disease. Your patients benefit from the sophistication of academic-level medical services with the perfect fusion of personalized care. We offer the full continuum of care from prevention through complex disease management and outpatient follow up care.



PREVENTION

We help your patients be proactive about their health with our Heart Aware and Stroke Aware online assessments at EEHealth.org/healthaware. These assessments quickly identify if a patient is at risk and offers an opportunity for onsite screening.

DIAGNOSIS/TREATMENT

Physicians

Our doctors work as a team, drawing on their specialized training to deliver the best diagnosis and treatment for your patients. Our physician team prides itself on providing close, ongoing communication with primary physicians throughout the patient experience.

Our team is represented by:

- Cardiac Surgery Associates
- Dupage Medical Group
- Midwest Heart
- Northwestern Interventional Radiology
- Specialized independent physician groups

Technology/Procedures:

We perform advanced procedures using state of the art technology including:

- State of the art cardiac cath labs and cardiac operating rooms
- LINQ Cardiac Monitoring System – first in the Western Suburbs
- Electrophysiology studies – first in Illinois to use the 3D Toperia Mapping Device
- Yttrium-90
- Watchmen
- Mitroclip
- Left ventricular assist technology



RECOVERY AND FOLLOW UP CARE

Cardiac Rehab:

We offer a 12-week Cardiac Rehab Program that will help your patients transition back to their daily lives after undergoing a heart procedure. Our extended cardiac rehab services provide treatment in a supportive environment with fellow patients.

Ambulatory Clinics:

We are also one of the few hospitals in Illinois to have a designated Heart Failure Wellness Clinic and A-Fib Clinic, which offer one-on-one support to help your patients manage their condition. We recently opened a COPD/Pneumonia Clinic to further support patients with chronic conditions.

RECOGNITIONS AND AWARDS

We are recognized for our quality care and successful outcomes.

- **Joint Commission-Disease-Specific Care Certifications**
 - Advanced Primary Stroke Center
 - Advanced Inpatient Diabetes
 - Acute Myocardial Infarction
 - Advanced Certification for Heart Failure

- **Cardiac Accreditations**
 - Intersocietal Commission for the Accreditation of Echocardiography Laboratories
 - American Association of Cardiovascular Pulmonary Rehabilitation
 - Get With the Guidelines—Heart Failure Gold Quality Award
- **Elmhurst Hospital Recognition**
 - Planetree Hospital Designation—We are only the fifth hospital in the world to achieve Planetree designation with distinction—a philosophy of care that truly puts the patient first and focuses on providing the highest level of care in a comforting environment.
 - Leap Frog A Grade designation—award winning care as a leader in patient safety and best practices
 - Magnet Recognition®—the ultimate credential for excellence in nursing. Only seven percent of the nation's 6,000 hospitals are recognized as Magnet facilities by the American Nurses Credentialing Center (ANCC).

For more information on Edward-Elmhurst's Cardiovascular and Interventional Radiology Services, visit EEHealth.org or call us at **(331) 221-5560**



The Integrative Medicine Clinics

Feel your best every day, at every age. At The Edward-Elmhurst Health Integrative Medicine Clinics we address your mind, body and spirit to assist you in living a better life now! We are currently offering Reiki, Mindfulness Therapy, Hypnosis, Smoking Cessation, Guided Imagery, Therapeutic Massage, Acupuncture, Naturopathic Nutrition, and Be Activated® Therapy at location specific clinics.

Reiki*

- Promotes relaxation & releases stress
- Balances the body, mind, and spirit
- Provides pain relief, improved sleep patterns and mental clarity

Mindfulness Therapy*

- Benefits of meditation include relaxation, clarity, stress reduction, and rejuvenation

Guided Imagery*

- Process of using directed thoughts and suggestions to guide one's imagination toward a relaxed, focused state.
- Helps you to prepare for an event or activity by imagining a positive outcome

Hypnosis*

- Process by which an individual's body relaxes while the mind enters a state of deep concentration
- Can be used to treat people with addictions, pain, anxiety disorders, and phobias

Therapeutic Massage (prices differ)

- Advanced massage techniques are a useful adjunct to one's health plan to promote healing and maintain health
- Massage is beneficial for many conditions, including chronic pain, soft tissue injuries and stress reduction

*Prices

\$65 for 60 minute session

\$45 for 30 minute session

(prices subject to change)

Acupuncture and Chinese Medicine

(prices differ)

- Includes an evaluation and treatment to resolve various body ailments through the use of acupuncture, cupping, or gua sha.
- Promotes a state of optimal health to provide relief from pain, headaches, digestive disorders, sleep trouble, colds and sinus congestion, stress, and more

Smoking Cessation (prices differ)

- Through hypnosis and acupuncture helps you to achieve your strong desire to quit smoking by focusing your energy into becoming a non-smoker
- Provides you with proven techniques to help you develop new habits to stay smoke free

Naturopathic Nutrition (prices differ)

- Promotes healthy lifestyles which encompasses the mind, body, and spirit
- Empowers and encourages patients to be accountable for their own health through education of their disease state and treatment plans
- Seeks to identify and remove the underlying causes of illness rather than eliminate or suppress symptoms
- Utilizes traditional and modern therapies to manage a broad range of health conditions including digestive issues, pain management, skin conditions, etc
- Treatment modalities include, but are not limited to: nutrition counseling, supplemental, botanical, and homeopathic therapies

Services may be covered by your insurance with a referral, self-pay options are also available.

To make an appointment please call
(331) 221-6135.

Services vary by location.

EEHealth.org/services/integrative-medicine

Healthy Driven
Edward-Elmhurst
HEALTH

ER, Immediate Care, Walk-In Clinic or Doctor's Office?

Knowing where to seek treatment could save you time, money and even your life. This information will help you decide which option is best for your particular health situation. Remember, there is always a care provider that you can speak with, even when your physician's office is closed.



Call or see your doctor

Preventive Care, Illness Treatment

Services may include:

- Annual physicals and preventive care
- New or existing health conditions
- Lingering aches, pains or other symptoms
- Cold, flu, infections and other illnesses
- Medication management

It's always best to see your primary care physician first, when possible. Your physician also provides recommendations and guidance based on your personal health goals.

Edward-Elmhurst Health has more than 1,700 physicians in its network. Visit EEHealth.org to view contact information for your physician.



Go to a Walk-In Clinic

Quick Care for Minor Issues
(12 months and older)

Symptoms may include:

- Cold, flu, sore throat, cough, mild asthma, insect bites
- Minor injuries or cuts
- Skin conditions
- Immunizations, school/sports physicals, health screenings and vaccinations

Fast care for minor illnesses and injuries, cold and flu symptoms, school and work physicals, and vaccinations.

Care provided by: Physician assistants and nurse practitioners.



Go to Immediate Care

Advanced Care, Same-Day
(All ages)

Symptoms may include:

- Minor breaks, sprains or fractures
- Fever, vomiting and dehydration
- Minor injuries and cuts needing stitches, asthma, allergic reactions, headaches, animal and insect bites
- Sports physicals*

Our team will care for your unexpected urgent medical needs that require advanced care; just walk in.

Care provided by: Physicians, physician assistants, nurse practitioners and nurses.

*Should not replace your child's annual wellness exam with his or her physician.



Go to the ER or call 911

Serious, Life-threatening
Injuries and Illnesses (All ages)

Symptoms may include:

- Chest pain, difficulty breathing
- Head injuries, abdominal pain
- Unusual headache, numbness/weakness/clumsiness, loss of vision
- Uncontrolled or heavy bleeding or bone fracture/dislocation

We offer 24/7 board-certified trauma care and full hospital technology at three locations.

Care provided by: Physicians and nurses.

Questions on where to go? Please call (630) 527-3645.

Find out more about convenient care and check out our Wait Times for ER, Immediate Care and Walk-in Clinics at EEHealth.org/care.



Find an Edward-Elmhurst Health Physician

Office visits are cost effective and the best option for non-emergency care.

Edward-Elmhurst Health has more than 1,700 physicians in its network. Visit EEHealth.org to view our online physician directory.

Schedule an appointment online now!
EEHealth.org/schedule



Immediate Care

Edward-Elmhurst Health Centers

Addison
303 W. Lake St.

Bolingbrook
130 N. Weber Rd.

Hinsdale
8 Salt Creek Lane

Lombard
130 S. Main St.

Naperville
1804 N. Naper Blvd.

Oak Park
932 Lake St.

Oswego
6701 US Hwy. 34
(Hwy. 34 & Orchard Rd.)

Hours

Mon-Fri: 8 am–8 pm*

Sat/Sun/Holidays: 8 am–4 pm

*Addison & Bolingbrook close at 10 pm on weekdays



Walk-In Clinics

Aurora
1222 N. Eola Rd.

Bensenville*
1127 S. York Rd.

Elmhurst
755 N. York

Naperville*
2855 W. 95th St.

Naperville*
127 E. Ogden Ave.

Plainfield
16519 S. Rt 59

River Forest*
7525 Lake St.

Romeoville*
20 S. Weber Rd.

Wheaton*
30 Danada Square West

Woodridge*
2317 75th St.

Yorkville
88 W. Countryside Pkwy.

***Jewel-Osco Locations**

Hours

Mon-Fri: 8 am–7:30 pm

Sat/Sun: 9 am–4:30 pm*

*Plainfield opens at 8 am on weekends

We may stop accepting new walk-in patients earlier than clinic closing time due to high patient volume.



Emergency Departments

For life-threatening emergencies, call 911 immediately.

Edward Hospital
801 S. Washington St.
Naperville
(630) 527-3358

Elmhurst Hospital
155 E. Brush Hill Rd.
Elmhurst
(331) 221-0200

Edward Plainfield
24600 W. 127th St.
Plainfield
(815) 731-3000

Hours
Open 24/7,
365 days a year

Questions on where to go? Please call (630) 527-3645.

Wound Care Services

Having a wound that won't heal can affect your whole life. A non-healing wound that hasn't responded to conventional treatment within four weeks is a serious medical condition that requires specialized care.

Edward-Elmhurst Health offers in-depth specialty care to treat chronic wounds. You benefit from the collaboration of physicians from a variety of disciplines, certified wound care nurses and other providers – all working together to help you feel better.

We offer personalized, compassionate care to patients with chronic wounds, including: diabetic foot ulcers, leg ulcers, pressure ulcers, bone infections, burns, surgical wounds and damaged tissue, among others.

At Edward-Elmhurst, we also offer advanced wound care treatment for wounds caused by diabetes, hypertension, infection, lymphedema and other conditions. You'll receive an individual care plan, which incorporates the latest advances in wound healing.

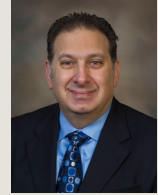
Making an appointment is the first step to feeling better. Call **(630) 527-3002** (Edward) or **(331) 221-6090** (Elmhurst) to schedule your appointment.

To learn more about our advanced treatment options, go to EEHealth.org/services/wound-care.

Our Team



Samer F. Najjar, MD
System Medical Director
Wound Care



Michael Martirano, MD
Elmhurst Hospital
Medical Director
Wound Care

Certified Wound Care Nurses

Naperville & Plainfield



Elizabeth Francis, APN



Sandi Jiongco, APN

Elmhurst



Laura Barnes, APN



Azam Tayyebi, APN

Locations

Wound Healing & Hyperbaric Center

801 S. Washington Street
Naperville
(630) 527-3002

Outpatient Wound Care Center

Center for Health
1200 S. York Road, Suite 1120
Elmhurst

Outpatient Wound Care

Edward Plainfield
24600 W. 127th Street
(2nd floor, Cancer Center)
Plainfield

Nancy W. Knowles Cancer Center

Medical Oncologists



Alexander Hantel, MD
System Director, Oncology Services

Alex Hantel earned his Medical Degree with honors from the University of Illinois, Abraham Lincoln School of Medicine in 1981, and completed his residency in internal medicine at the University of Illinois Hospital. He completed his fellowship in oncology

at The Johns Hopkins Oncology Center in Baltimore, Maryland. Dr. Hantel is board certified in internal medicine and medical oncology. Dr. Hantel served on the faculty of Loyola University Medical Center for nearly 20 years. He is is fluent in English and Russian.



Brian Myre, MD

Brian Myre earned his medical degree from the Medical College of Wisconsin in Milwaukee, and completed his residency in internal medicine and fellowship in hematology/oncology at the Indiana University School of Medicine in Indianapolis, where he gained particular expertise in genitourinary, thoracic and hematologic malignancies. Dr. Myre's

focus is on providing patient-centered care, combining the best evidence-based approach with each individual's personal goals and values. He cares for patients with solid tumors, hematologic malignancies and benign hematologic disorders.



Marilyn Evrard, MD

Marilyn Evrard earned her medical degree from the University of Illinois, Chicago in addition to completing her internship and residency there. Dr. Evrard earned her fellowship in oncology at the University of Illinois, Chicago as well. Dr. Evrard's aim is to help patients live their lives the best they can and provide focused care to each individual.



Hollis Walker, MD

Hollis Walker earned his medical degree from Case Western Reserve University School of Medicine in Cleveland Ohio, where he also completed his residency in internal medicine. Double-fellowship trained in Hematology/Oncology and Clinical Medical Ethics at the University of Chicago, Dr. Walker is a member of

the American Society of Clinical Oncologists, American Society of Hematologists, and the American College of Physicians.



Amaryllis Gil, MD
Associate Medical Director

Amaryllis Gil earned her medical degree from Loyola Stritch School of Medicine and completed her fellowship in hematology and oncology at Loyola University Medical Center, where she was also on faculty. She is the principal investigator for

clinical trials at Nancy W. Knowles Cancer Center. Dr. Gil is board certified by the American Board of Internal Medicine in Medical Oncology, Hematology, and Hospice and Palliative Medicine. A member of the American Society of Clinical Oncology, her clinical interests include solid tumors with concentration in breast cancer, high risk breast cancer prevention clinic, colorectal cancer, lung and prostate cancer, as well as benign and malignant hematology. Dr. Gil speaks English and Spanish.



Sania Raza, MD

Sania Raza earned her medical degree from Southern Illinois University in Springfield where she graduated with honors. She completed her internship and residency at Mayo Clinic and then completed her fellowship in Hematology and Oncology at Northwestern University, Feinberg School of Medicine.

Dr. Raza brings the latest advances in targeted therapies to cancer treatment. She uses a holistic approach to patient care with an emphasis on quality of life for her patients with solid tumors, blood cancers and benign hematology conditions. She is a member of the American Society of Clinical Oncology, the American Society of Hematology, the American Association of Cancer Research and the American Society of Clinical Investigation. Dr. Raza is fluent in Urdu/Hindi.

For more information please call (331) 221-5900.

Nancy W. Knowles Cancer Center Radiation Oncologists



Neil A. Das Gupta, MD, director of radiation oncology

Neil A. Das Gupta, MD of Fox Valley Radiation Oncology serves as the system director of radiation oncology at Edward-Elmhurst Health. He earned his Doctorate of Medicine from the University of Illinois at Chicago in 1997, earning alpha omega alpha (AOA) designation in the process.

He completed his residency at the University of Chicago in 2002, and became board certified later that year. He then was in private practice in Rockford, IL for over six years before he joined Edward Hospital.

While in Rockford, Dr. Das Gupta was instrumental in helping create the first radiation oncology program in the Northern Illinois region to utilize both Intensity Modulated Radiation Therapy (IMRT) and Image Guided Radiation Therapy (IGRT). He was also responsible for starting a stereotactic radiosurgery program in the area. He has participated in a number of national trials in both the Cancer and Leukemia Group B (CALGB) and Radiation Therapy Oncology Group (RTOG), and has been the on-site principal investigator for a number of these trials. Dr. Das Gupta has also been the cancer center liaison to the American Cancer Society.



Vasudha Lingareddy, MD, FACRO

Vasudha Lingareddy, MD, FACRO, of Fox Valley Radiation Oncology, LLC, has been with the Edward Cancer Center since 2003. Dr. Lingareddy received her Doctorate of Medicine in 1991 from Jefferson Medical College in Philadelphia, and in 1996, she completed

her residency and fellowship in radiation oncology at Thomas Jefferson University Hospital in Philadelphia. She was honored with the American Cancer Society fellowship award and the American College of Radiation Oncology Fellowship award.

At Edward Hospital, Dr. Lingareddy serves on the Internal Review Board, Cancer Committee, Breast Task Force, Cancer Center Task Force, and Radiation Safety Committee. She is also a Southwest Oncology Group Investigator, participating in national cooperative group trials including NSABP and RTOG. Dr. Lingareddy is board certified in radiation oncology.



Oh-Hoon Kwon, MD

Oh-Hoon Kwon, M.D., of Fox Valley Radiation Oncology graduated from University of Illinois at Urbana-Champaign in 1995 with a degree in Chemical Engineering, where he earned membership in the Tau Beta Pi Engineering Honor Society. He then graduated from University of Illinois at

Chicago in 1999 with his medical degree, where he earned membership in the Alpha Omega Alpha Honor Medical Society. He then completed residency training in Radiation Oncology at the University of Chicago Hospitals in 2004. He completed externships at the Seattle Prostate Institute and Yonsei University Medical Center in Seoul, Korea.

Dr. Kwon has expertise in intensity-modulated and image-guided radiotherapy, accelerated partial breast radiotherapy, and stereotactic ablative body radiotherapy. He is board certified in Radiation Oncology.



Andy Su, MD

Andy Su, M.D. of Fox Valley Radiation Oncology earned his undergraduate degree from MIT and his medical degree from the University of Chicago in 2002. He later completed his radiation oncology training at the University of Chicago Medical Center in 2007. During his training, he was

selected to participate in the prestigious Howard Hughes Research Scholars Program at the National Institute of Health (NIH). Dr. Su has also been honored numerous research awards and has published many research articles and abstracts while at the University of Chicago. Dr. Su is also a member of the Leadership Board of the DuPage County American Cancer Society as well as the Medical Director and an investor of the CyberKnife Center of Chicago.

Dr. Su has expertise in Intensity Modulated Radiation Treatments (IMRT) and Image Guided Radiation Therapy (IGRT). In addition, he has extensive experience in Stereotactic Radiosurgery (SRS) and brachytherapy procedures for breast, gynecologic and prostate cancers. Dr. Su is board certified in Radiation Oncology.

For more information please call (331) 221-5900.

Elmhurst Hospital Neurosciences Team

Patients coming to Elmhurst Hospital can rest assured that physicians treat the full range of neurological disorders, including headache disorders, peripheral neuropathies, carpal tunnel syndrome, parkinson's disease, vertigo, alzheimer's disease, epilepsy, spine disorders, radiculopathy and musculoskeletal dysfunction. To see a complete list of physicians on our team, please visit visit EEHealth.org/services/neuro.

Neurology



**Arkadiy
Konyukhov, MD**



**Donald
Lussky, MD**



**Anna
Sorokin, MD**

Physiatry



**Alex
Behar, MD**



**Brian
Couri, MD**



**Lawrence W.
Frank, MD**



**Henry
Legaspi, MD**



**Yogen
Patel, DO**

For more information visit EEHealth.org/services/neuro or call **(331) 221-9095**.

Center for Health
1200 S. York Road
Suite 3160
Elmhurst

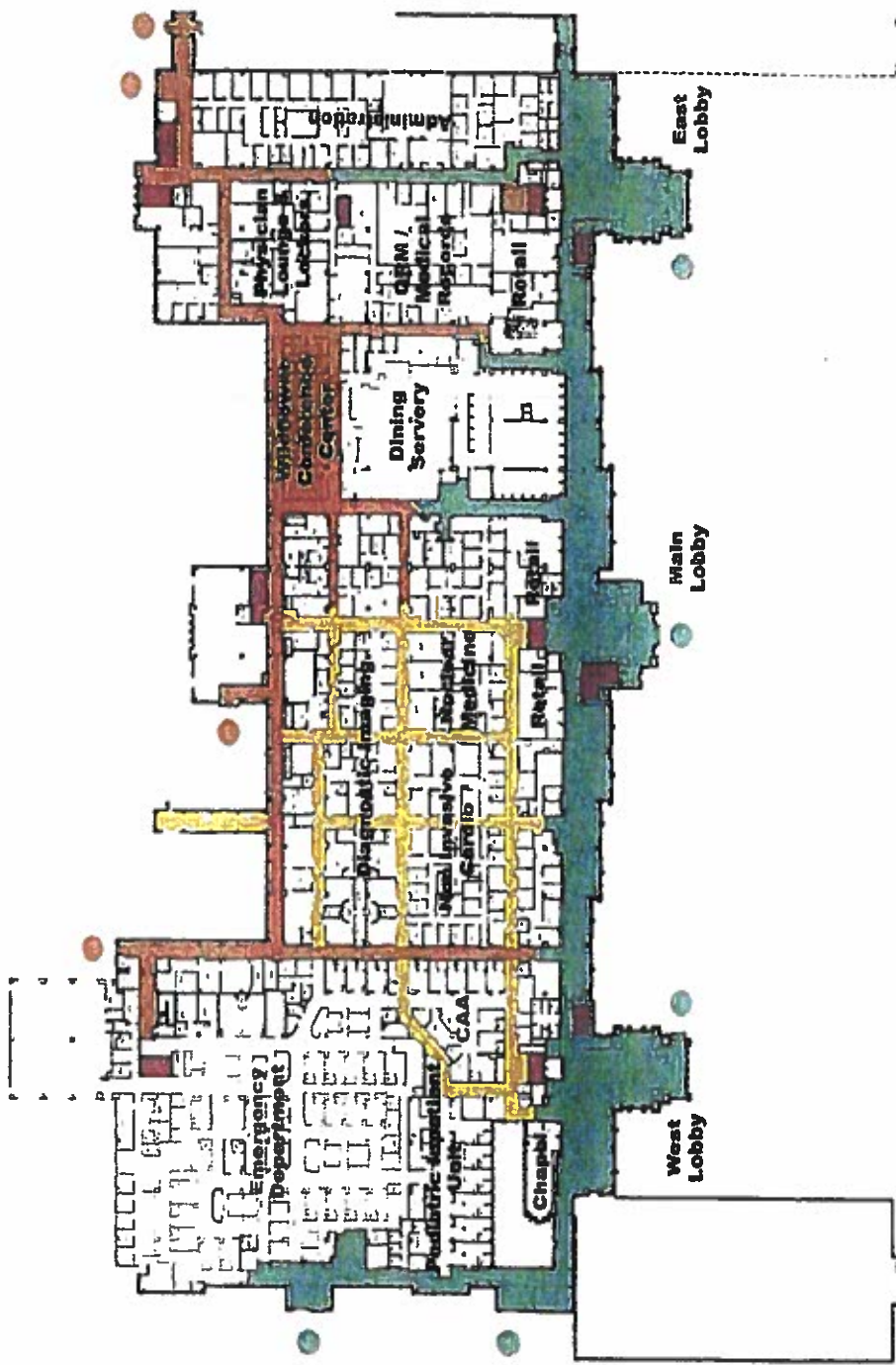
**Edward-Elmhurst
Health Center**
303 W. Lake Street
Suite 301
Addison

**Edward-Elmhurst
Health Center**
932 Lake Street
Suite 300
Oak Park

OFF STAGE ELEVATORS and HALLWAYS

First Floor

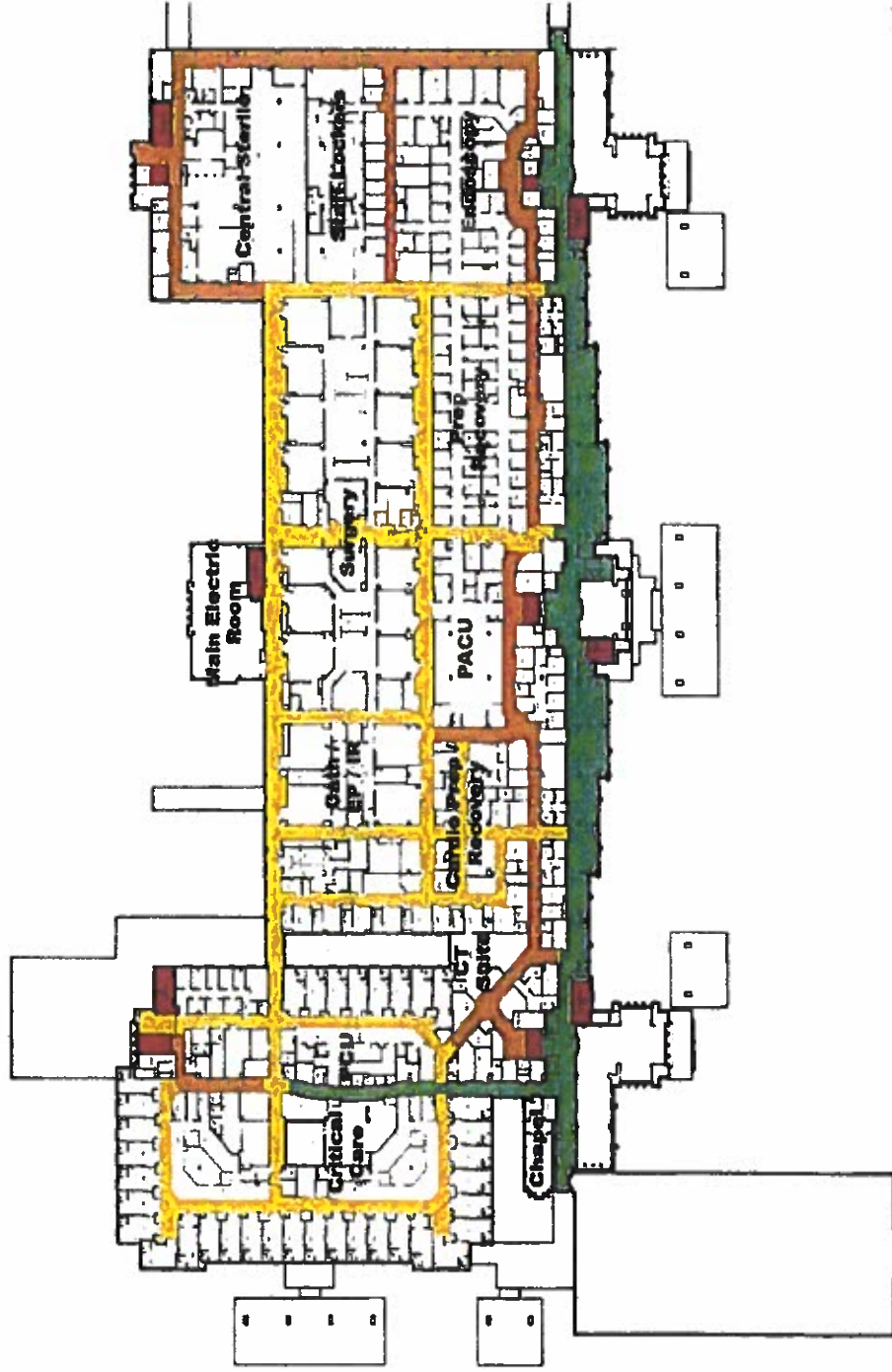
- Public
- Staff
- Public / Patient / Staff
- Staff Elevators and Stairs



OFF STAGE ELEVATORS and HALLWAYS

Second Floor

- Public
- Staff
- Public / Patient / Staff
- Staff Elevators and Stairs



CLARIFICATION: Use of Secure Text Messaging for Patient Care Orders Is Not Acceptable

In 2011 The Joint Commission published a Frequently Asked Question (FAQ) document stating that it is not acceptable for physicians or licensed independent practitioners (LIPs) to text orders for patient care, treatment, or services to hospitals or other health care settings. At the time, the technology available could not provide the safety and security necessary to adequately support the use of text messaging for orders.

In the May 2016 issue of *Perspectives*, The Joint Commission acknowledged that technology has advanced and secure text messaging platforms now offer the functionality to address all of the data privacy and security concerns outlined in the 2011 FAQ. As such, The Joint Commission revised its previous position to allow LIPs or other practitioners, in accordance with professional standards of practice, law and regulation, and policies and procedures, to use a secure text messaging platform to send orders as long as the system met specific requirements and all the typical required components of an order are included.

Following publication of the May *Perspectives* article, The Joint Commission determined that although its prior data privacy and security concerns had been addressed, concerns remained about transmitting text orders even when a secure text messaging system is used. In collaboration with the Centers for Medicare & Medicaid Services (CMS), The Joint Commission developed the following recommendations:

- **All health care organizations should have policies prohibiting the use of unsecured text messaging—that is, short message service (SMS) text messaging from a personal mobile device—for communicating protected health information.** Joint Commission Information Management (IM) Standard IM.02.01.01, Element of Performance (EP) 1 requires organizations to have a written policy addressing the privacy of health information, and this requirement applies to the privacy of health information transmitted through text messaging. Organizations are expected to incorporate limitations on the use of unsecured text messaging in their policies protecting the privacy of health information. This policy should be routinely discussed during orientation of all practitioners and staff working in the facility.
- **The Joint Commission and CMS agree that computerized provider order entry (CPOE) should be the preferred method for submitting orders as it allows providers to directly enter orders into the electronic health record (EHR).** CPOE helps ensure accuracy and allows the provider to view and respond to clinical decision support (CDS) recommendations and alerts. CPOE is increasingly available through secure, encrypted applications for smartphones and tablets, which will make following this

recommendation less burdensome.

- **In the event that a CPOE or written order cannot be submitted, a verbal order is acceptable.** However, verbal orders should be used infrequently, and the use of verbal orders should be closely monitored to ensure that these are used only when it is impossible or impractical to use CPOE or written orders without delaying treatment. Verbal orders are not to be used for the convenience of the ordering practitioner. The requirements around the use of verbal orders are included in both the Joint Commission standards and the Medicare Conditions of Participation (CoPs).
- **The use of secure text orders is not permitted at this time.** The implementation of secure text orders was discussed with numerous text messaging platform vendors, experts in EHRs, and other key stakeholders. After extensive discussion weighing the pros and cons of using secure text messaging systems to place orders, The Joint Commission and CMS have concluded that the impact of secure text orders on patient safety remains unclear. A variety of issues were identified that influenced this decision, including the following:
 - *The implementation of an additional mechanism to transmit orders may lead to an increased burden on nurses to manually transcribe text orders into the EHR.* This could adversely affect nurses' ability to do their other critical patient care duties.
 - *The transmission of a verbal order allows for a real-time, synchronous clarification and confirmation of the order as it is given by the ordering practitioner.* As the process for texting an order is an asynchronous interaction, an additional step(s) is required to contact the ordering practitioner for any necessary discussion prior to order entry.
 - *In the event that a CDS recommendation or alert is triggered during the order entry process, the individual manually entering the order into the EHR may need to contact the ordering practitioner for additional information.* If this occurs during transmission of a verbal order, the conversation is immediate. If this occurs with a text order, the additional step(s) required to contact the ordering practitioner may result in a delay in treatment.

The Joint Commission and CMS will continue to monitor advancements in the field and engage with key stakeholders to determine whether future guidance on the use of secure text messaging systems to place orders is necessary. In the meantime, questions may be directed to textingorders@jointcommission.org. 